

## Assign Sections of Data to the Formats

Numerous collections of data are available to be viewed in the portals. This process controls which ones are available in the different formats. Example: The grades may be made viewable for all portals; parents, students, staff, and teachers. However, some may be made viewable to only parents or only staff, etc. Below is a list of sections available for the portals.

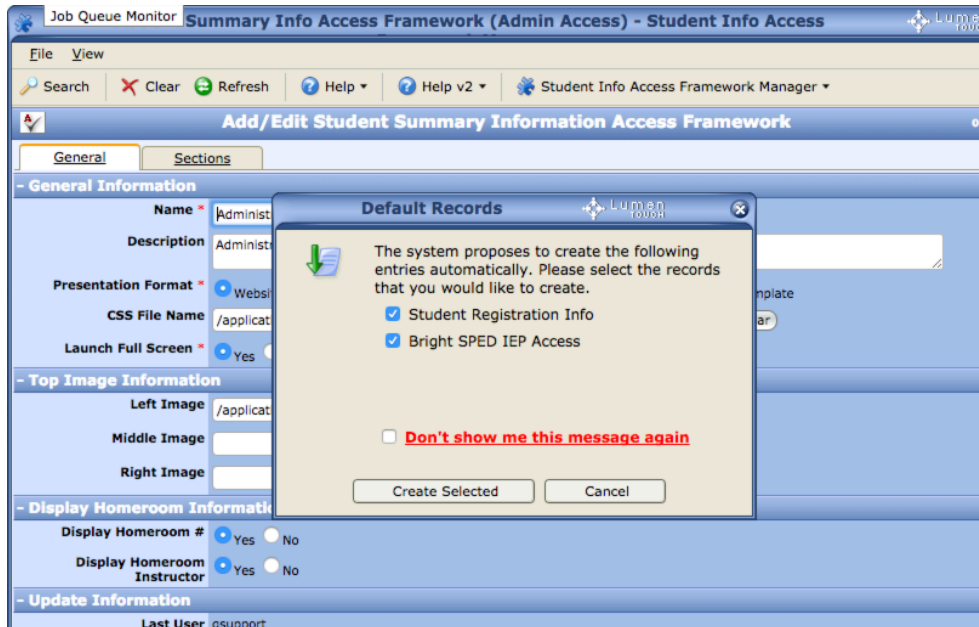
Bright SPED IEP Access	Gives Access to the student's IEP if using Bright SPED
Bright SUCCESS	Displays information from the Bright SUCCESS module
Emergency Contacts Notification Settings	Displays setting for Emer. Notifications. Allows updates
Fees and Fines	Displays Fees and Allows for payments online
Inventory Center Information	Displays Items assigned in the Inventory Center
Library Fees	Displays Library Fees
Library Media Center Information	Displays Information from the Media Center
Next Year Student Courses	Displays the student's schedule for the next year
Parent/Guardian Notification Settings	Allows for updates to notifications
Standards Based Items	Display scores of standards based items
Student Assessment Info	Displays Assessments
Student Attendance Info	Displays Attendance History
Student Classroom Activities (External)	Displays Classroom Activities
Student Course Info	Displays Grades and grade information
Student Course Requests	Allows students to request courses
Student Discipline Summary	Displays Disciplines marked to display in portal
Student Emergency Contacts	Displays emergency contacts
Student Enrollment Course Selection	Allows students to enroll directly into the master schedule
Student General Info	Displays General Demographic data
Student Health Info	Displays, Allows Updates to Health records
Student Lunch Information	Displays Lunch transactions and balances, etc.
Student Performance Groupings	Shows the status of Performance Groups
Student Registration Info v2	Allows online Registration for New Year
Student Schedule	Displays/Prints the Student Schedule
Student School Activities	Displays Activities entered in the Lumen Calendar
Student Transcript Info (Internal)	Displays grad. requirements, print Internal Transcript
Student Transcript Info (Unofficial)	Displays grad. requirements, print Unofficial Transcript

A default set of sections have been assigned to each view. Follow the following steps to edit or add additional sections.

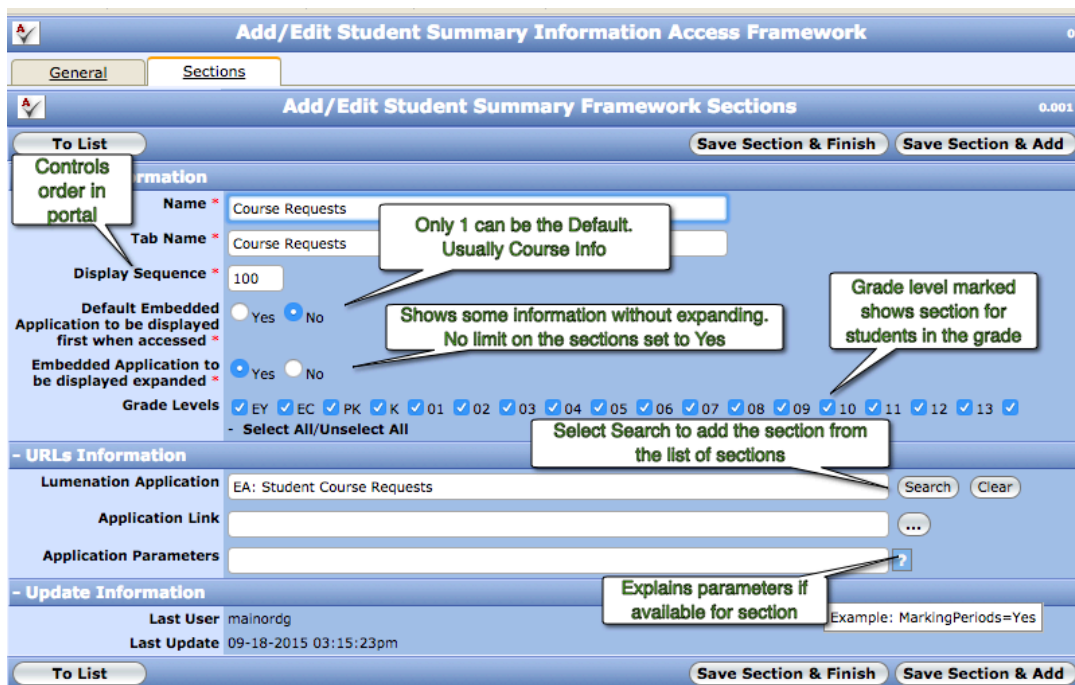
*EzStart -> Lumen Touch - District Admin -> Student Info Access Framework -> Student Summary Info Access Framework -> Student Info Access Framework Manager*

Select by clicking on the View to edit. The system may display the default views to include if not already available. Check and Create or Cancel. It's ok to create them even if they are not something needed presently. Simply uncheck all grade levels.

### Select the tab Sections



Click on the section to edit or select Add New to add a section from the list above.



Save and Finish